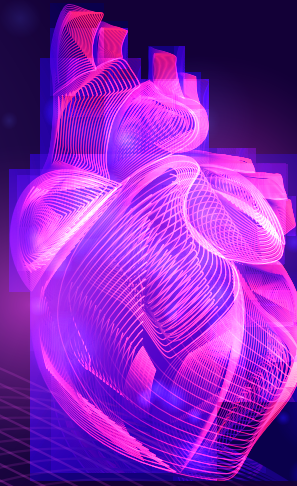


ACE

Advanced Courses in Echocardiography

Mastering Your Echocardiography Skills



GE is proud to present 4D Echo Navigators Course

What is ACE?

ACE is a GE Healthcare series of interactive educational courses and workshops aimed to foster the implementation of 4D Echocardiography imaging in the daily routine of the echo lab and interventional suites.

The courses may include live scanning or expert guided hands-on sessions on workstations.

Who Should Attend?

The session is designed for cardiologists, cardiac surgeons, interventional cardiologists, anesthesiologists, sonographers, who require advanced training in 4D TTE and 4D TEE and for those who want to understand the added value of 4D Echocardiography in various heart diseases and guide surgical and interventional procedures.

Learning Objectives

- Understand the basic principles of 4D Echo technology
- Understand the different modes of implementing of 4D echo and uses and benefits of each mode
- Understand the added value of 4D echocardiography to assess the anatomy and pathophysiology of the various heart diseases
- Assess Cardiac chamber and geometry and function using 4D Echocardiography
- Use 4D echocardiography to perform quantitative analysis of the heart valve morphology and function
- Understand the role of 4D echocardiography in structural heart disease interventions

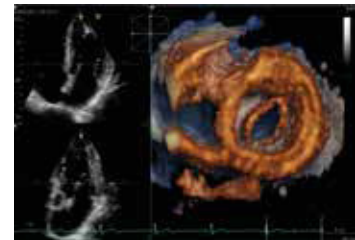
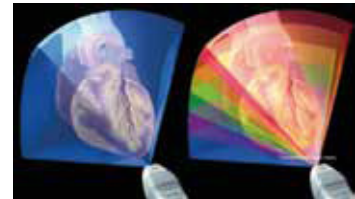
Location
Date
Time

For more details contact:

Agenda

4D Echo Navigators Course

- 4D Echo Principles
- Multiplane Imaging (Biplane, Triplane)
- 4D Volume Acquisition (Single Beat vs. Multi Beat)
- 4D Navigation (Multi Slice, Flexi Slice, 2 Click Crop, Live and from stored datasets)
- Auto Alignment and 4D Auto Views
- 4D Zoom Prepare
- 4D Auto LVQ
- Hands-on session



Speaker



Jawdat Sanuri
Product and Marketing
Manager (CVUS)
GE Healthcare, EGM

Responsible for all marketing activities for CVUS across EGM region including sales strategy, NPI launching, sales training for GE and distributor organizations, managing customer and regional events and educational courses and seminars.